

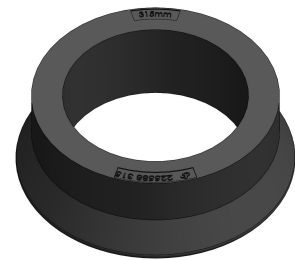
CLIMATE DECLARATION FOR CONE FLAT

Declared unit: 1 unit of product

The climate declaration presents the greenhouse gas emissions of the product, expressed as kg CO₂-equivalents (GWP100). The results are based on a life cycle assessment (LCA) performed in accordance with ISO 14025

Information about the product

Studied products is a riser ring for sewage installation. The product is made of recycled PVC and is a sustainable alternative to traditional riser rings made of concrete.



Information about the company

Lauridsen Handel & Import A/S has more than 30 years of experience as a manufacturer and service provider and is one of Denmark's leading suppliers to the wastewater- and roadwork market. Through wholesalers, timber merchants and hardware stores, we distribute products that meet people's very basic needs. Without necessarily being aware of it. Several of our products are hidden behind walls, under floors, roads, parking lots etc.

With us as a business partner, you always get the best solutions for wastewater management. We are always ready to help builders, architects, engineers, contractors and sewers with calculations, dimensions, guidance, and some of the best products on the market.

System boundary

The system boundary for this study is defined as cradle-to-gate (modules A1-A3). The assessment includes raw material extraction and processing (A1), transportation of materials from suppliers to the manufacturing site in Denmark (A2), and manufacturing processes at the production facility (A3).

The system boundary therefore covers all processes from raw material extraction through production until the finished product leaves the factory gate.

Primary data for manufacturing processes and transportation distances are based on information provided by the company and its suppliers. Background data for upstream processes are based on secondary LCA databases.

Climate declaration

This climate declaration addresses only the climate impact of the product, expressed as global warming potential (GWP100). Other environmental, social, and economic impacts are not assessed in this study.

The diagram below shows the carbon footprint of the product expressed as kg CO2-equivalents (GWP100).
 The product range global warming: kg CO2-eq. per unit.

| Product number | Specifications | GWP100 (A1-A3) kg CO2-eq./ unit | Saving GWPI00 (A1-A3) to traditional concrete solution On average in % |
|----------------|----------------|---------------------------------|---|
| 225588315 | Ø315 | 2,74 | 84% |
| 225588425 | Ø425 | 3,57 | |
| 225586601 | Ø600 | 9,30 | |
| 225588680 | Ø680 | 8,05 | |

LCA modelling software: Ecochain

Background database: Ecoinvent v 3.9 (cut-off system model).

Validity: 2030-10-01